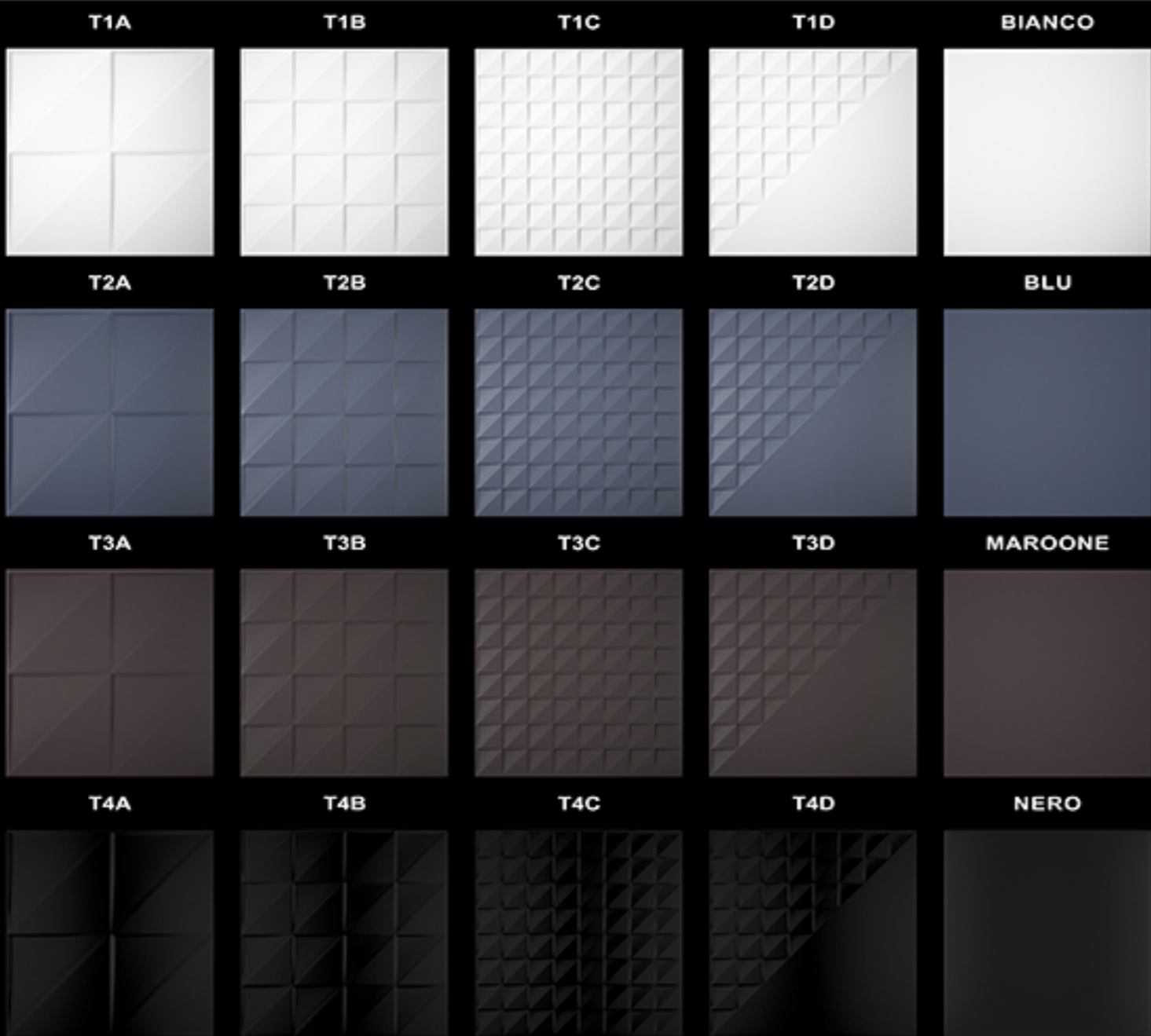
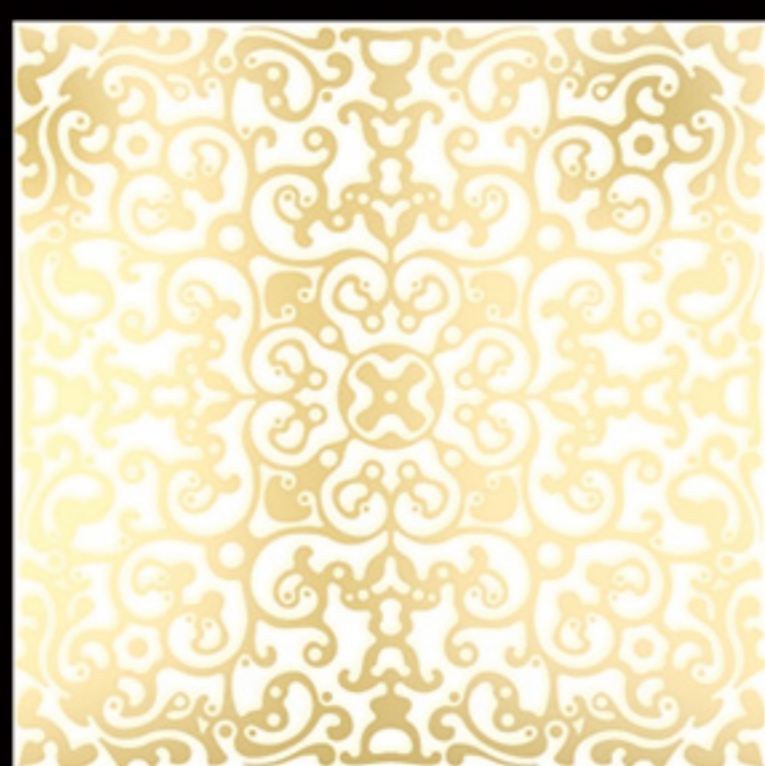




Ceramica **Bardelli**



Journey in time. Tekne is an updated reissue of a collection launched in the late 80s. Journey in space. From starry and space station atmospheres, of which the designer is an enthusiastic pioneer, to the more earthy interiors of our homes and offices. The modular system creates voids and solids, parts in relief and recesses, even slight suggestions of curves as it plays with variations of texture and colour. It is a shame that at the end of the day, in complete and cosy silence, we cannot view the projection of a time-lapse video that captures, in just a few seconds, the fascinating alternation of light and shadows on the surfaces, an unrelenting movement oblivious to our presence or absence.



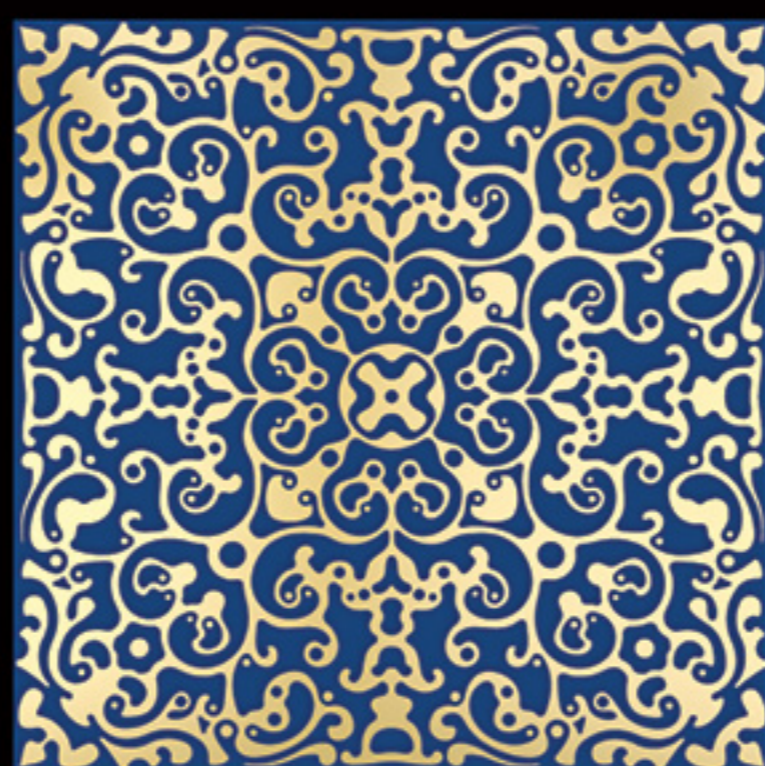
CARMEN BIANCO EXTRA



CARMEN D1



CARMEN C8



CARMEN C6



CARMEN D3





IRIS2



C6



C8



C9



D1



D3



NERO



To paraphrase Wanders himself, tiles clothe our homes as fashion clothes our selves. If it were down to Iris, every wall would flaunt evocative floral arabesques, optical effects, pure entertainment, a decorative feast with no end and no limitations. The pleasure of choosing among the six colours, highlighted by a white or beige background, and of supporting your preference in full lies with us. Is not conducting quiet or animated discussions on the choice of fabrics with which to line our nests and highlight our furnishings all part of the game? Fashion & design victims, welcome.

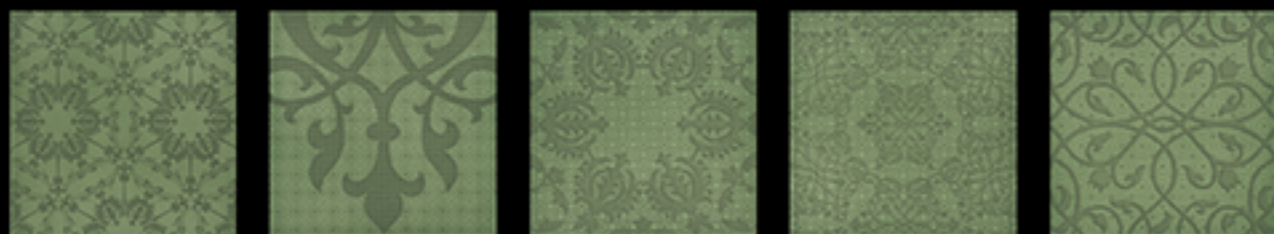
Minoo A1



Minoo D1



Minoo C8



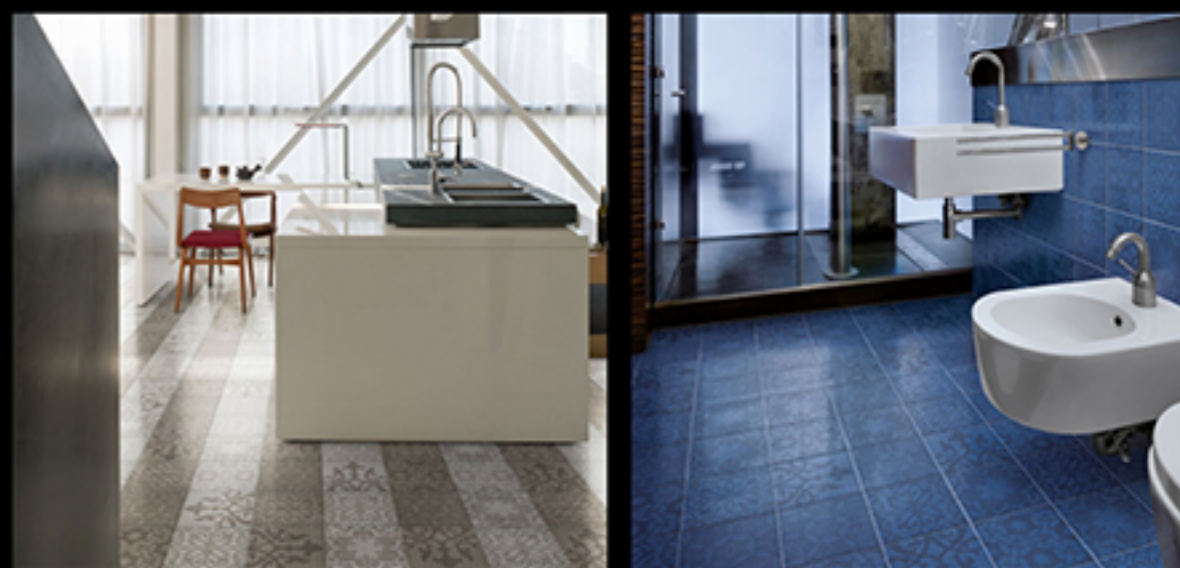
Minoo C6



Minoo C4



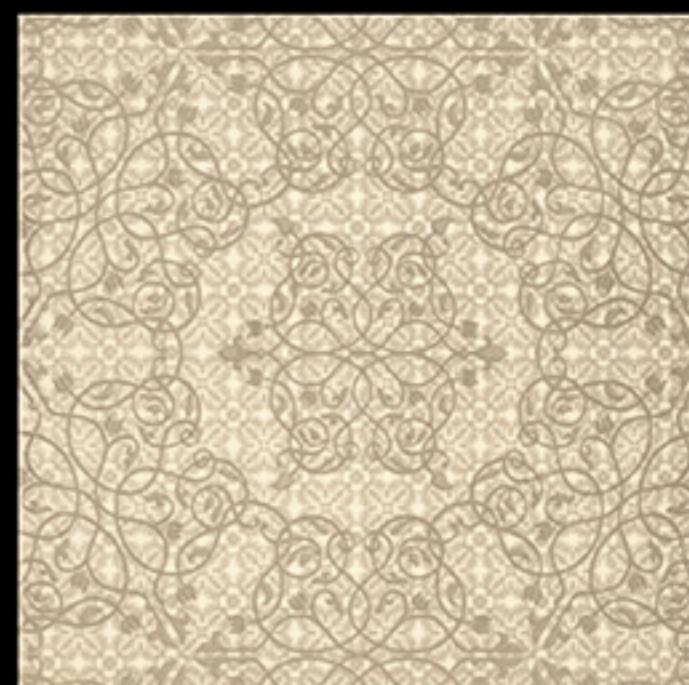
Minoo D3



The road to happiness is paved with...what? Not an easy question to answer off the cuff. Minoo accompanies our every step, with its carpet of dense arabesques, evoking ever evolving emotions through five different graceful motifs rotating in an endless cycle. Wherever it rests, Minoo creates a new living dimension, a floral maze in which time passes lightly and joie de vivre suddenly takes flight.



Minoo A1



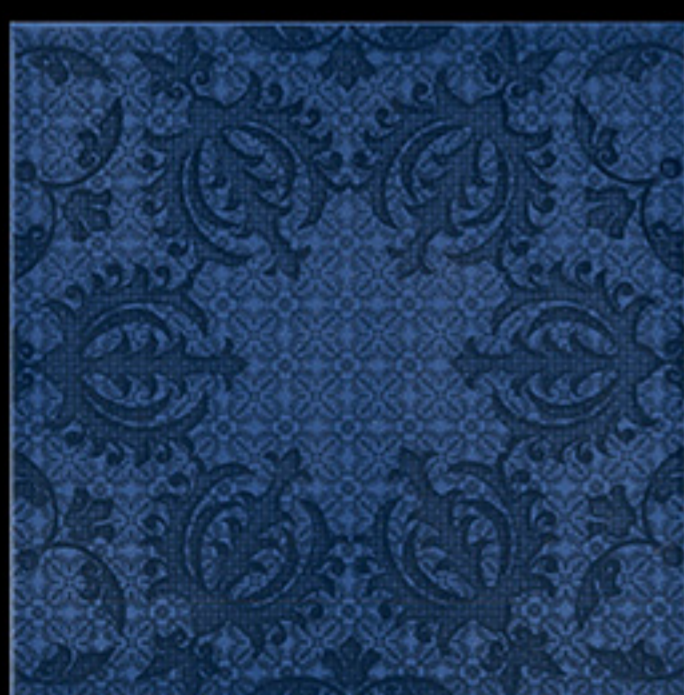
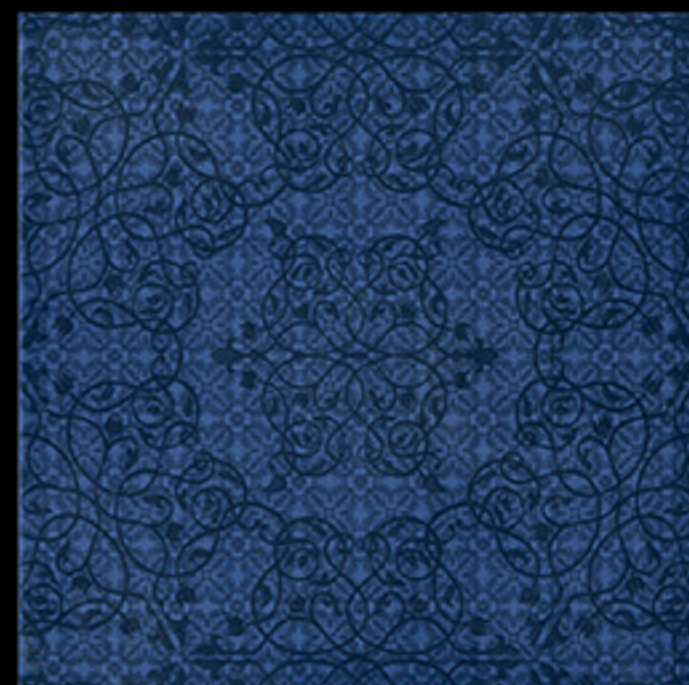


Minoo C4



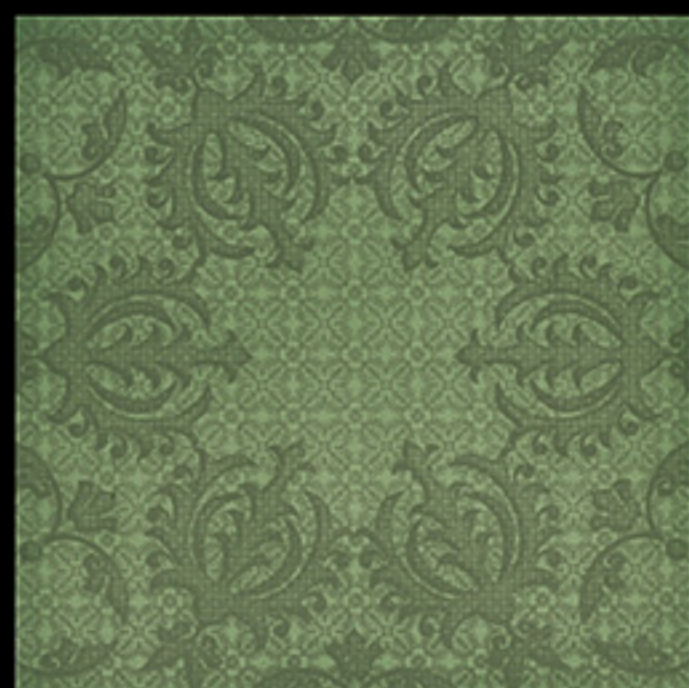


Minoo C6



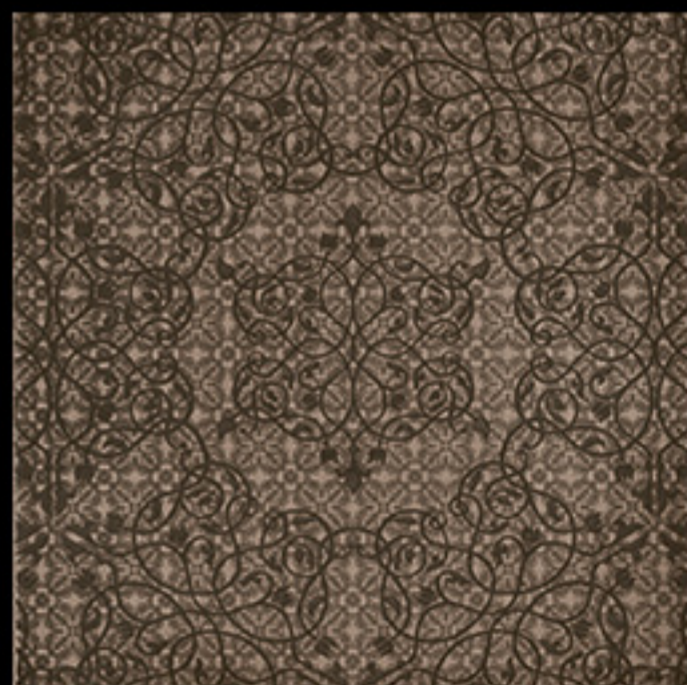


Minoo C8



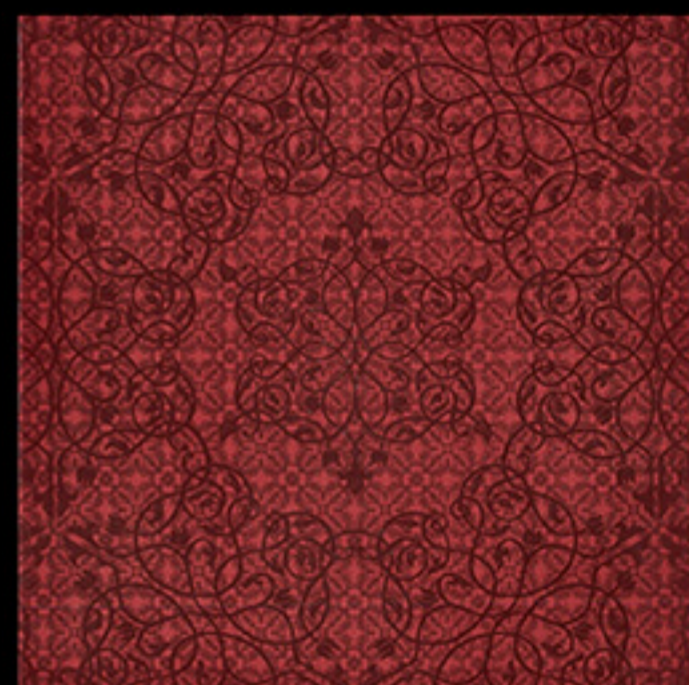
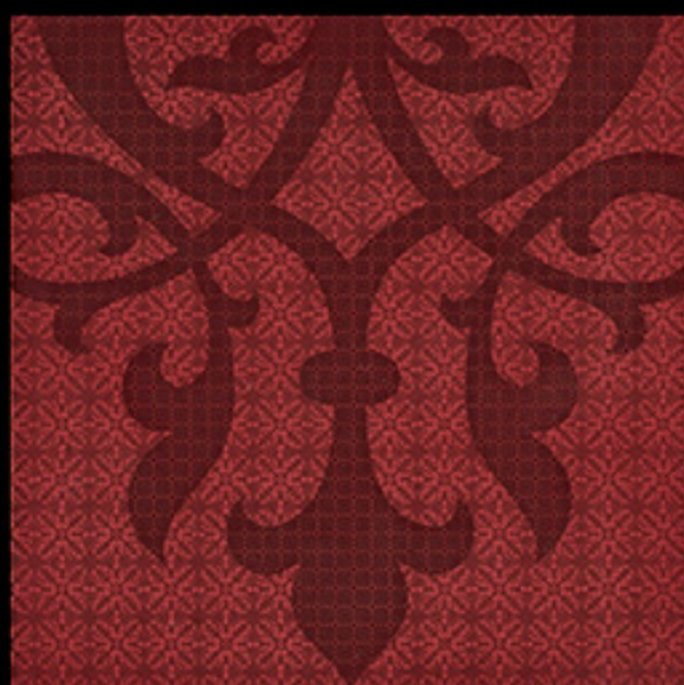


Minoo D1





Minoo D3

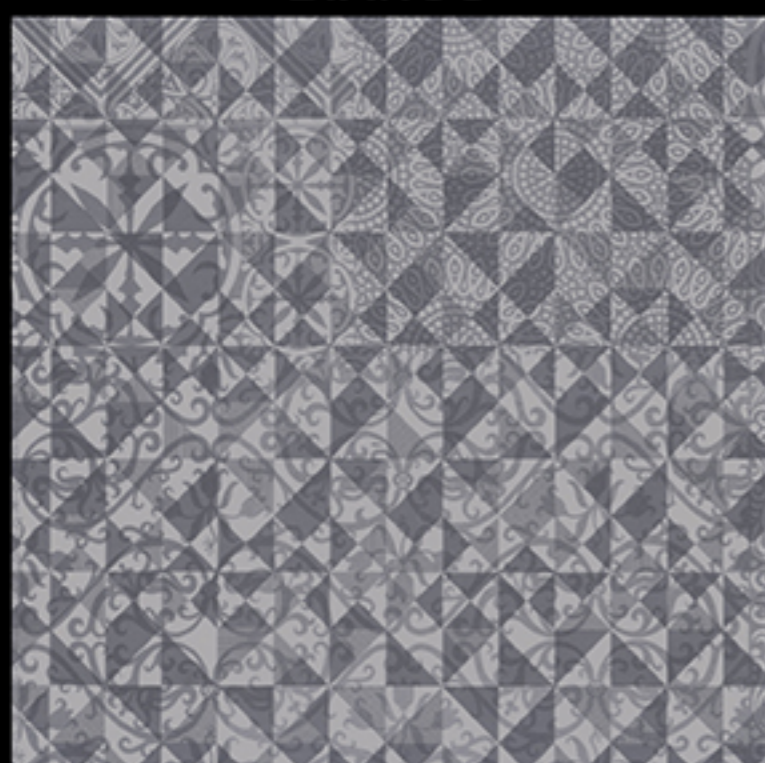




Sofia



BIANCO



GRIGIO



BLU



BEIGE



NERO

Our eyes can perceive the essential, yet we are bewildered by it. We proceed with caution on the thick fabric of a mat that a weaver of wonder has skilfully made with his hands. We recognise the determined excavation work that unearthed the ornamental motifs of distant ages, and then combined them in a pattern of overlapping and transparent elements. We acknowledge the effects of originally transforming formerly familiar surfaces in a dizzying three-dimensional experience. After meeting Sofia, we still are, but we will never be the same.

SHISHIR

BETHARIA

G - R - O - U - P

CORPORATE OFFICE : 401, VIP Plaza, Plot B/7, Veera Indl. Estate, Off Andheri-Malad Link Road, Andheri (w), Mumbai - 400 053.
Tel : +91-22-49723551 / 52 / 53 | E-mail : projects.sbps@sbgroun.co.in / business.pcc@sbgroun.co.in

KLAY STORE : 23 F, Laxmi Indl. Estate, Near Laxmi Plaza, Andheri-Malad Link Road, Andheri (w), Mumbai - 400 053.
Tel : +91-22-49760303 | E-mail : business@klaystore.com